

CMC

1

1.1

1.2

1.1-1

	<i>l</i>						

1.3

1.4

2

2.1

2.2

2.3

3

3.1

3.2

3.2-1

		/		

3.2-3

3.2-4

3.4

3.4-1

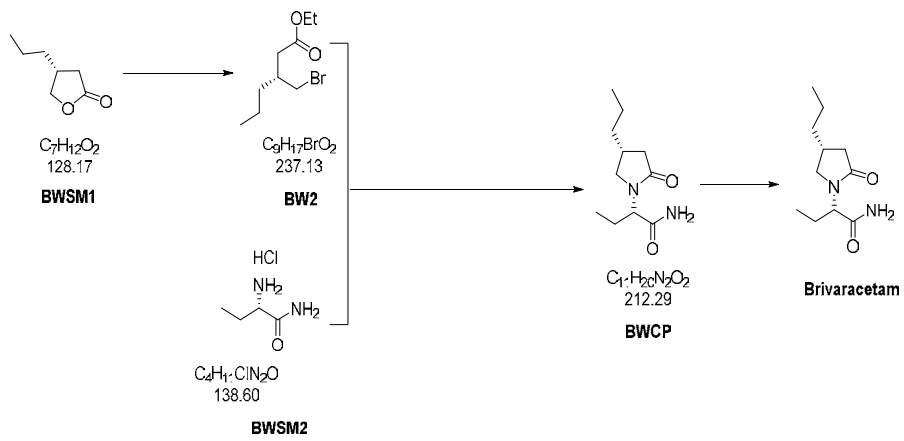
t/a

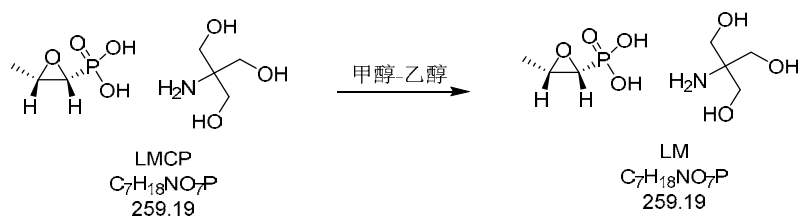
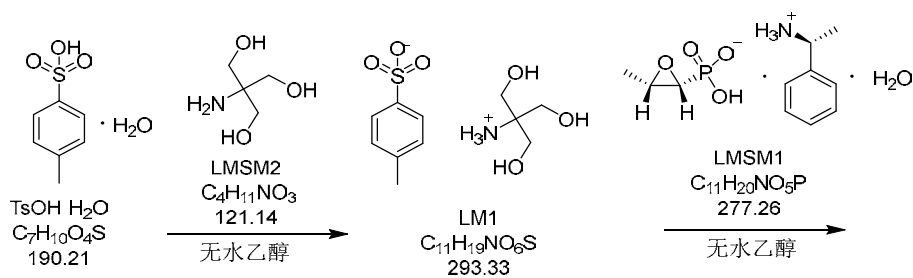
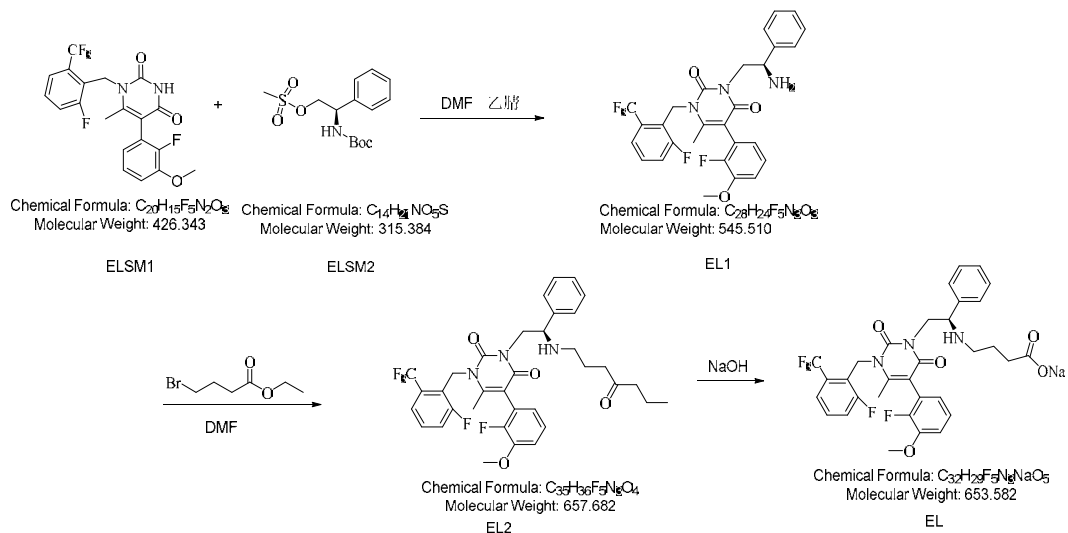
3.5

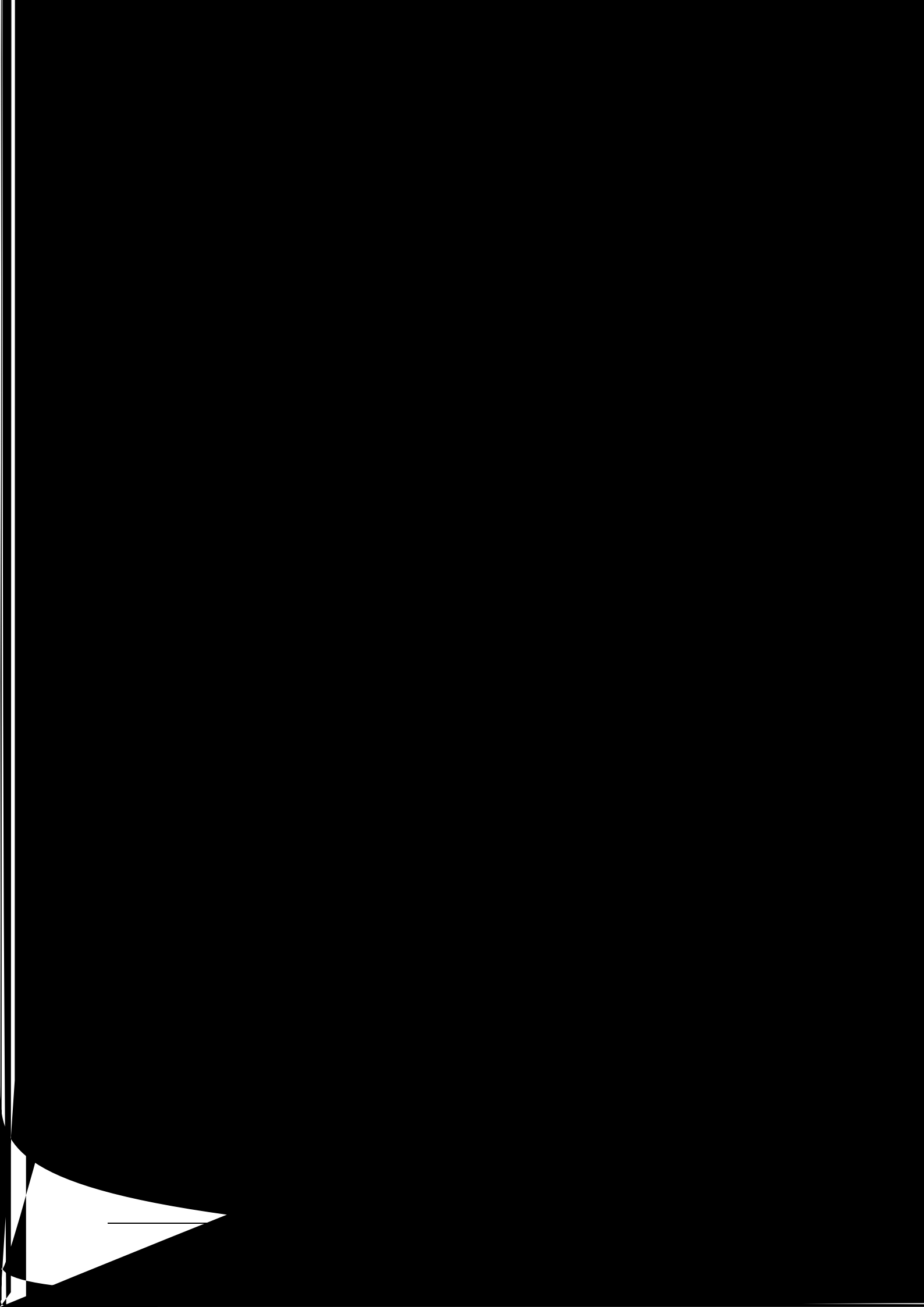
3.4-2

t/a

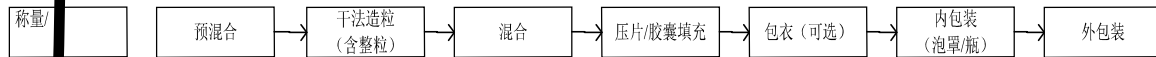
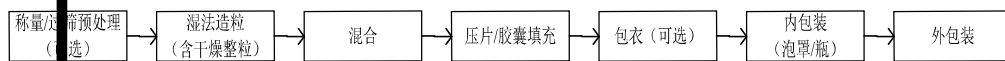
3.5.1







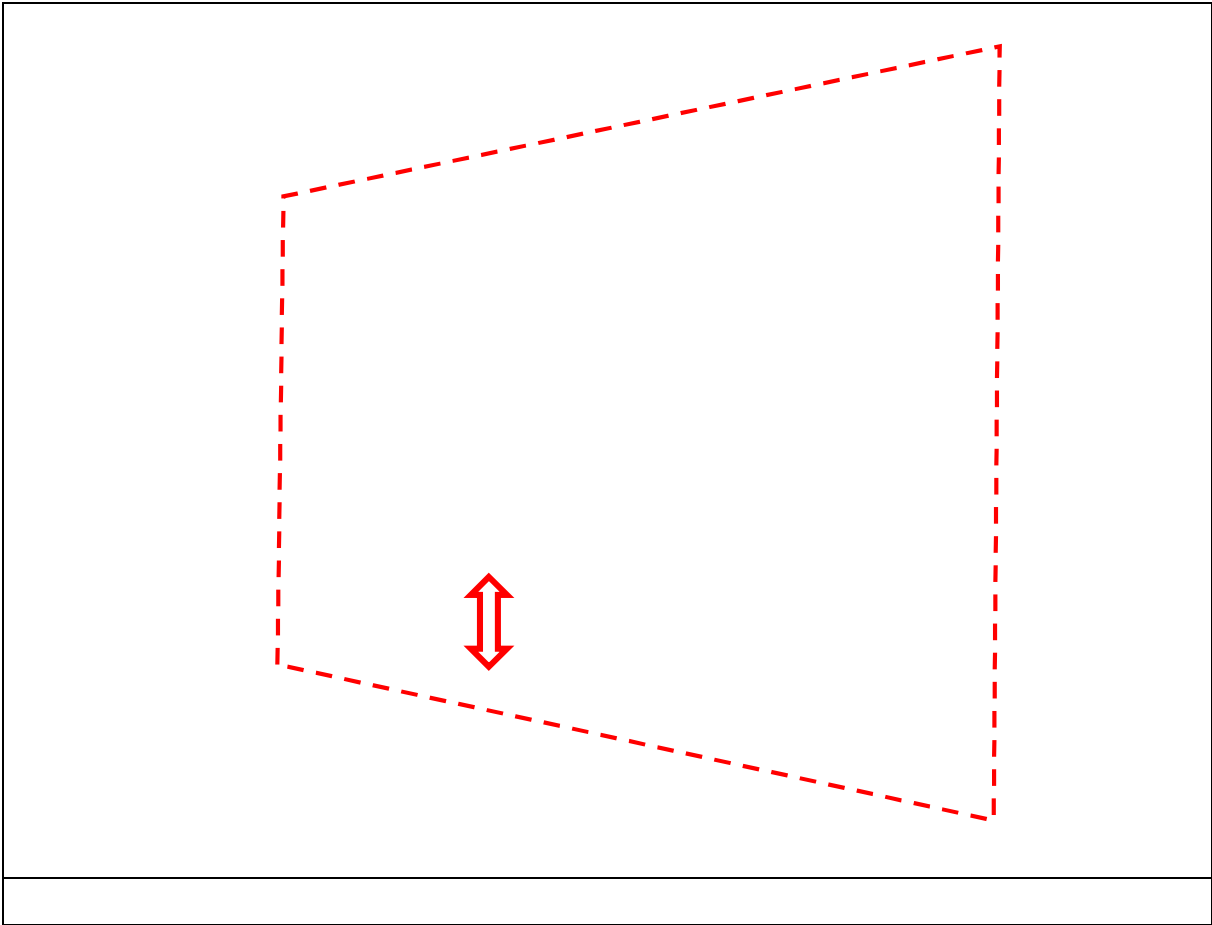
3.5.2



3.5.3

称量/过筛预处理
(

9					
11					
13					
15					



3.6.1

3.6.2

3.6-3

3.6-4

4

4.1 /

4.1.1

4.1.1

4.1.2-1

4.1.2-2 DA010

4.1.2-5 DA013

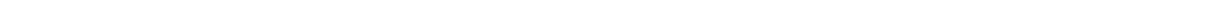
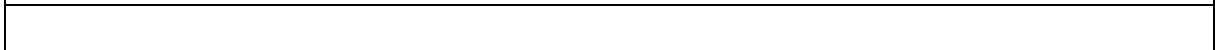
4.1.2-6 DA014

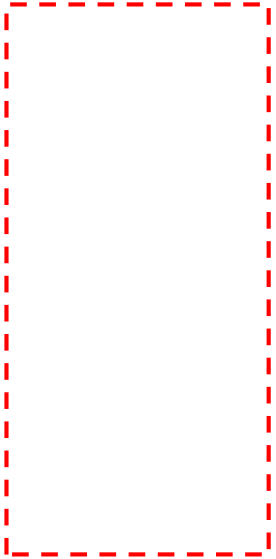
4.1.2-7 DA015

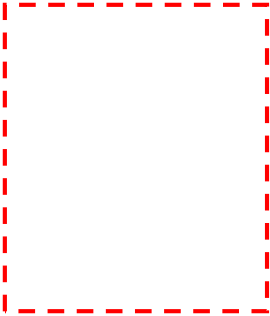
4.1.2-8

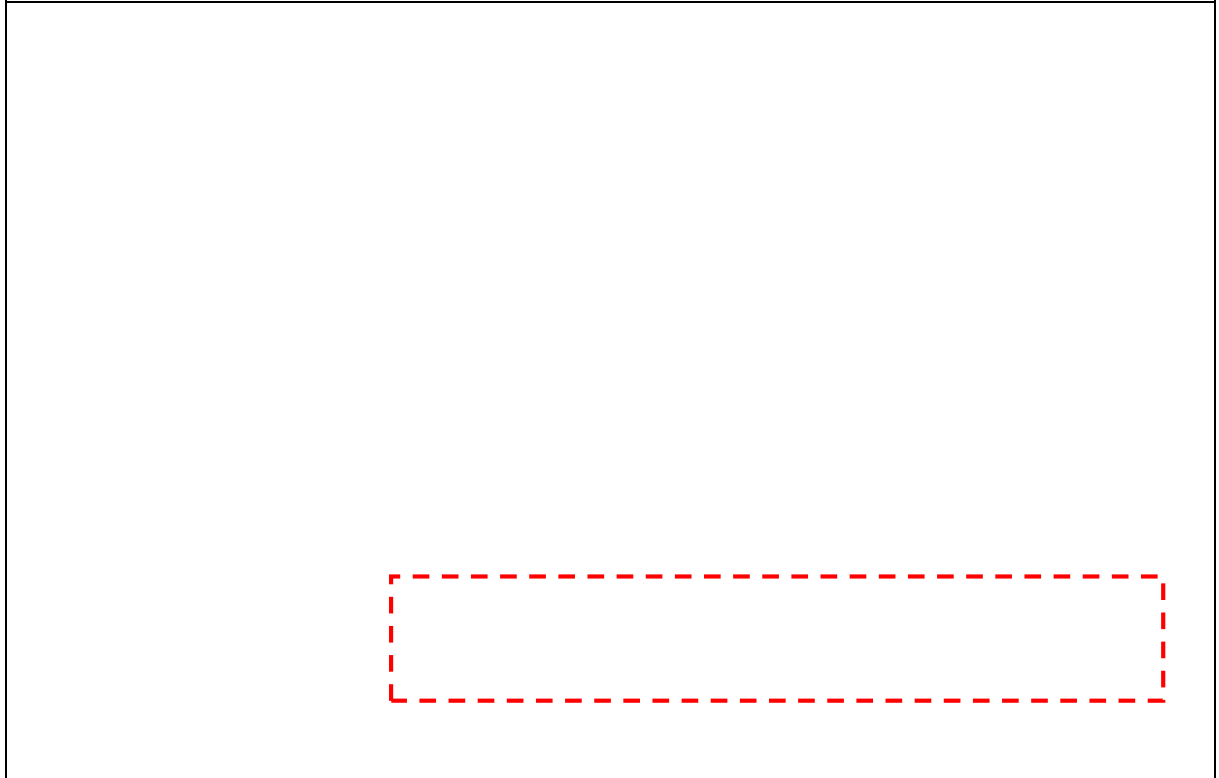
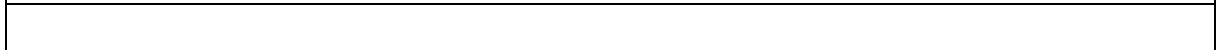
	mm					m/s	

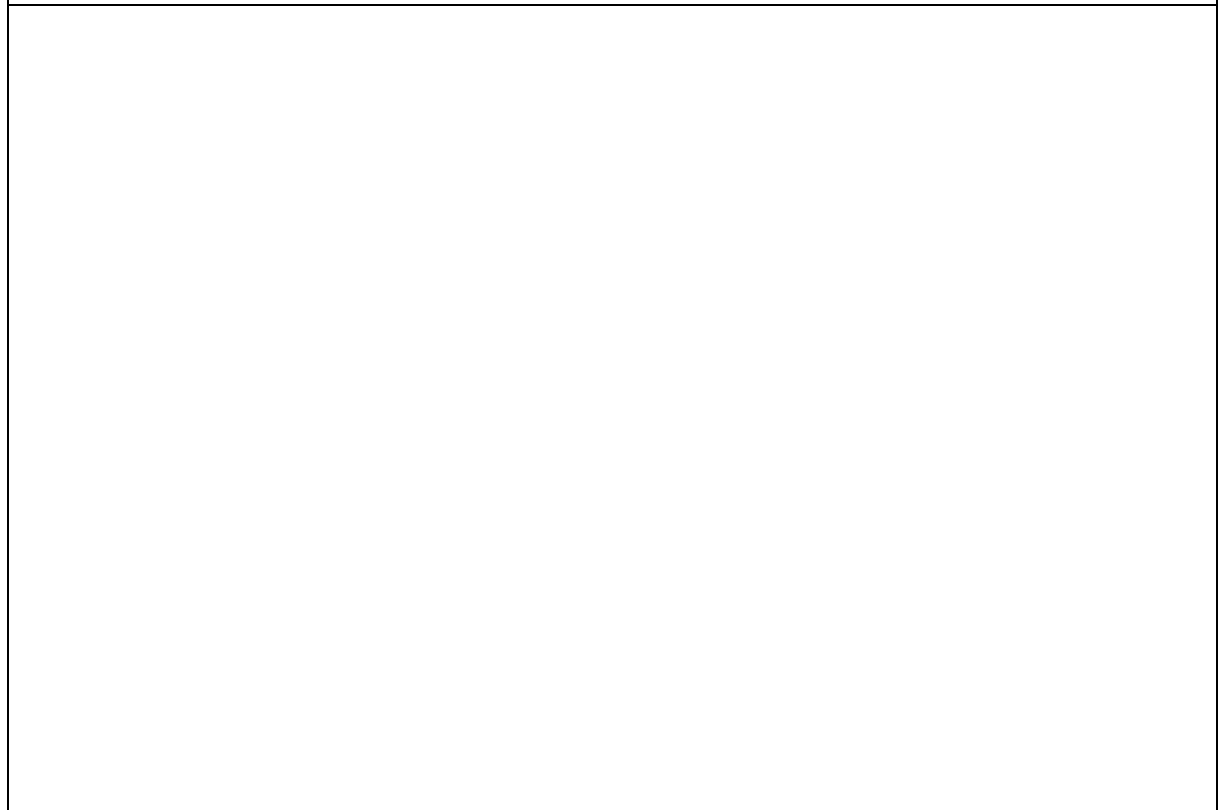
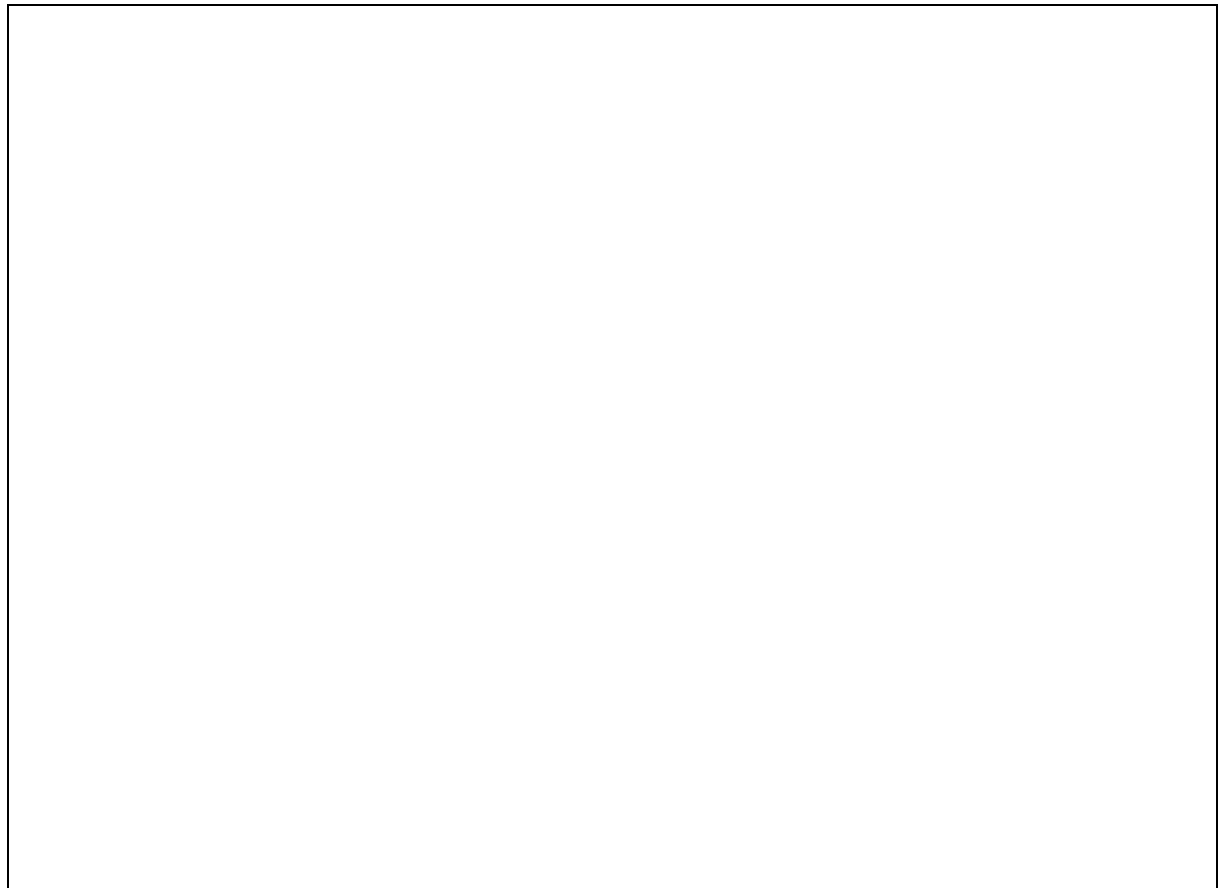
	mm					m/s	











4.1.4

HW02

041-49

#900-

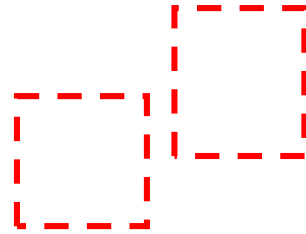
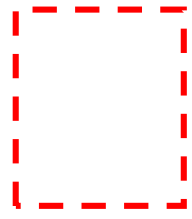
006-50

276-

HW02

HW02

4.1.4-2



4.2.1

4.2.2

4.2.2

4.3

5

5.1

5.2

6

6.1

6.1

		mg/L	

6.2

6.2-1

		mg/m ³	kg/h		mg/m ³	kg/h		
			m			m		

)xE+ V V("PS1)%P

			t/a	t/a

6.4-2

			t/a		t/a			

7

7.1

7.1

--	--

7.2.1 5#~13# 14#~19#

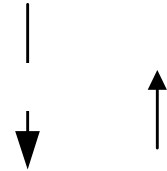
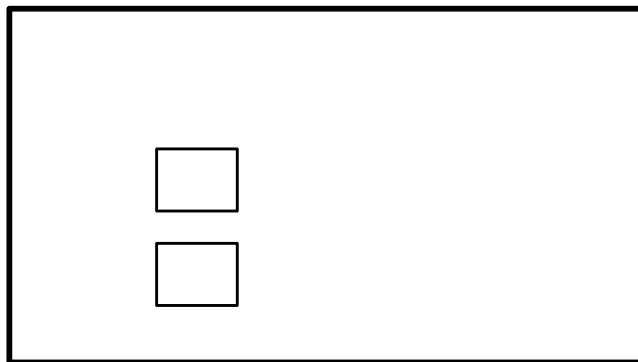
7.2.2

7.2.2

				DMF	

7.3

7.3





7.3



8

8.1

8.1-1

8.1-2

	mg/m ³		mg/m ³

	mg/m³		mg/m³

8.3

8.4

8.5

9.2

9.2.1

9.2.1-1

			mg/L	mg/L

9.2.1-2

mg/L

	1			2			COD	2									COD			
	pH	COD	SS	pH	COD	SS	%	pH	COD	SS				pH	COD	SS				%
							/													/

9.2.2

2023.05.15

2023.05.18

2023.05.19

		2023.05.18					2023.05.19					
	/	6#					F7+					
	/	DA015										
	m	17										

9.2.2-8 DA016

		2023.05.05					2023.05.12					
	/	18#					F7+					
	/	DA016										
	m	20										

			"ND"					

9.2.3

9.2.3

		2023.05.18		2023.05.19				

9.2.4

9.2.5

9.2.5-1

	mg/L	t/a	t/a	

9.2.5-2

		kg/h	h/a	t/a	t/a	t/a	

9.3

9.3

0

10

10.1

10.1.1

10.1.2

DA010

DA011

DA012

DA013

DA014

DA015

DA016
